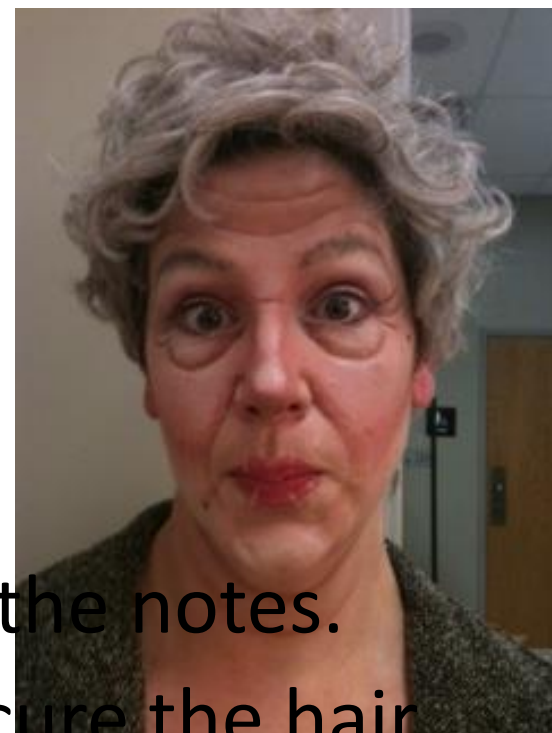


Exercise 4: Happy Old Age Character



As Mrs. Sone demonstrates, fill in the notes.

1. Start with a clean face and secure the hair out of the way.
2. Apply a *warm* foundation, perhaps the same one you used for “Myself only Older.” Push some foundation into the *eyebrows* , as we will try to raise them up just a bit.

3. Add the highlights and shadows to emphasize the bone structure of the face.

With this makeup, the goal is to create a character with a wide, open expression; so, we will be concentrating on using curved shapes and up-turned wrinkles.

a. Either be very subtle at the temple or leave out the temple shadow all together. Keep the forehead highlight round and wide.

b. At the cheek and jaw, create the effect for the round face, even if you have a lean, angular face.

- i. Using the rosy red color, add a curved shadow under the apple of the cheek. Fill the apple with highlight.
- ii. Add a fleshy appearance at the jawline with lots of highlight and the curved shadows.
- iii. Double or multiple chin trick: tuck the chin into the neck and see what shapes you can create. Shadow the folds and highlight the curves.

c. Shorten and widen the nose by stopping the highlight before the tip and adding shadow under the nose and up onto the tip.

d. Add a strong highlight to the brow bone, covering some of the actual eyebrow.

4. Assess your work. Do you see round shapes and soft edges? If not, make corrections now.

5. Time to add wrinkles. These will be similar to the ones you did for “Myself only Older,” but you may not put them all in exactly the same way.

a. On the forehead, create two or three up-turned creases, like *smiles* . If you have existing creases, the ones you add must align with the original creases at least in the center.

b. Consider adding a comma-shaped crease above each eyebrow; this will give the appearance of eyes wide open in a *surprised* expression.

- c. Crow's feet should be long and turn up at the ends.
- d. The eye bag can be exaggerated lower, making a happy curve.
- e. I will leave out the creases between furrowed brows; happy granny does not frown, right?
- f. The nasal-labial fold should stop short of the jaw and turn toward the center of the face slightly.
- g. Consider adding some dimples outside the nasal-labial fold.

6. Finishing touches—

a. Powder carefully. Re-emphasize anything diminished by the powder.

b. Eye shadow: add a bit of playful color to the eyelids. Add highlight color to inside corners to open up the eyes.

c. Eye liner: line the lower lashes. Add mascara if you like.

d. Blush/rouge: enhance under the apple of the cheek.

e. Lips: make them larger by lining outside the natural lip line, creating a heart shape on upper lip. Granny really loves giving kisses to her adorable little kiddos! Add a few age creases with highlight only.

– Eyebrows: create a nice curved line, on the top edge of your existing brow.

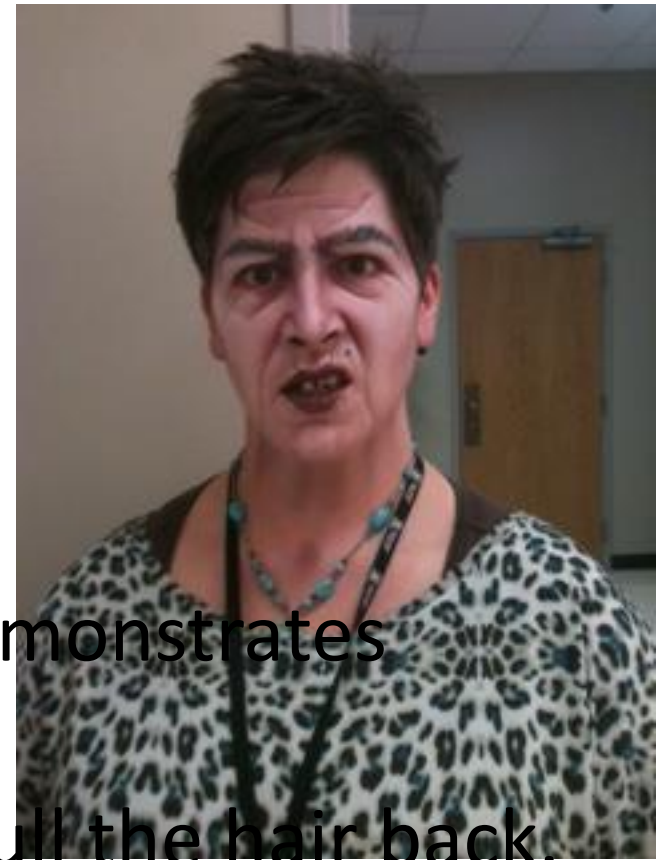
– Consider adding a beauty mark/mole or age spot.

– Stippling this character is optional.

Exercise 5: Evil Old Character

Fill in the notes as Mrs. Sone demonstrates gettin' old and mean!

1. Start with a clean face and pull the hair back.
2. For the evil old face, we will be looking for opportunities to add angles and down-turned lines to the face. We are hoping to create a lean, drawn expression.



3. For this character, consider using an alternate color scheme. Choose your lightest foundation, to give the face a pale, unhealthy appearance. If you need to make it paler, try tapping a layer of the highlight over the whole foundation; it's okay if the coverage is uneven. For the shadow, consider using the misty violet; for the highlight try the pure white.

4. As usual, we will begin with establishing the bone structure of the face.

a. With the shadow color, create an angular shape on the forehead. Narrow the forehead by heavily shadowing the temple area.

b. Seriously sink in the eyes with heavy shadow at the inside corners.

c. Create a long, thin nose by shadowing down the sides of the nose. Consider creating a crooked nose by shaping the shadow to reflect a bend.

d. Add shadow to the philtrum and above the upper lip, over the teeth. Shadow under the bottom lip.

e. Really sink in the cheeks and carry the shadow down onto the neck.

f. Find the tendons in the neck and add shadow between them.

- g. Now add highlight to the bony parts of the face:
- i. Highlight the forehead, emphasizing the angular shape created by the shadow.
 - ii. Emphasize the eyelid overhang by adding a strong, angled highlight.
 - iii. Keep the nose highlight long and narrow.
 - iv. Create a strong cheekbone, carrying the highlight down the front of the face (just outside the nasal-labial area).
 - v. Highlight the tendons on the neck.

5. Assess your work. Are you satisfied with the angular, drawn effect? Make any necessary corrections.

6. Time to add wrinkles. For more contrast, consider using a different shadow color for the wrinkles; try the maroon (found next to misty violet in the wheel) or use character shadow or cinnamon.

a. On the forehead, if you have no natural creases, try making severe/angular wrinkles. If you have natural creases when you raise your eyebrows, use the center , keeping the emphasis on a narrow shape to the face.

b. You definitely want to put in the creases between the eyebrows. Make them larger than they are naturally.

c. Crow's feet should be turned down and can be rather long.

d. The eye bag should not turn up into a happy curve; consider following a similar shape as the crow's feet.

e. The nasal-labial fold should be severe and continue all the way down to the jaw line. You should also make sure that it connects to the nose around the nares.

- Assess your work. Do the wrinkles help make the face look angular and unhappy? Are the wrinkles strong enough? Get up and view yourself from a distance.

8. Finishing touches:

a. Eyebrows: using the black eyeliner pencil, create strong eyebrows that nearly (or completely) meet in the middle. Angry eyes!

b. Lower eye rim: add bright red to give the eyes an evil edge.

c. Nostrils: make the nostrils seem larger and flared in anger by painting the inside with the black cream makeup.

d. Powder carefully. Check your work to see if you need to reapply anything diminished by the powder.

e. Mouth: there are several ways to make the mouth look evil.

i. Shrink the lips: with the brown pencil, draw the lips well inside the natural lip line.

ii. Darken the lips: consider filling in the lips with misty violet, maroon, or even black.

iii. Age the lips: make a tight pucker and add crease lines with both highlight and shadow .

f. If you want to break up the skin texture, you can stipple with any contrasting colors you wish.